

ABOUT US

The Canadian Biomarker Integration Network in Depression (CAN-BIND) is a national program of research and learning. Our community includes persons with lived experience, caregivers, researchers, healthcare providers, government agencies, industry partners, and mental health advocates who are working together to achieve mental wellness for all Canadians. CAN-BIND is discovering ways to identify the right treatment for the right person in order to help individuals with depression get well quickly, and stay well.

CAN-BIND is supported by the Ontario Brain Institute, an independent non-profit corporation, funded partially by the Ontario government.



CONTACT US

@CANBIND
www.canbind.ca
canbind@smh.ca

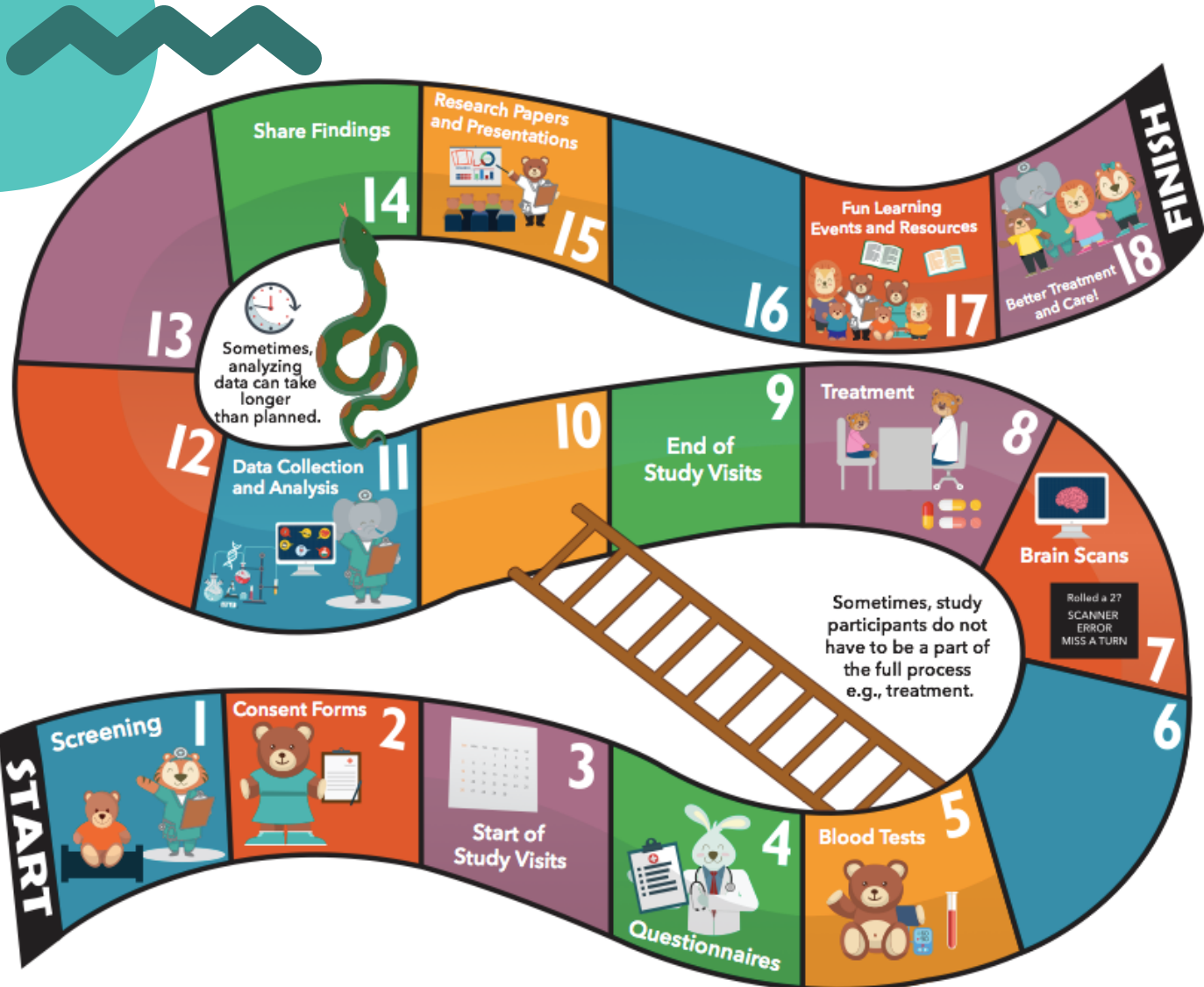


CLINICAL TRIALS 101

BOARD GAME

CLINICAL STUDIES

Learning and understanding all the research steps involved with participating in a clinical study can be daunting. The Clinical Trials 101 board game helps to highlight key research steps in a simple and fun way! Although studies vary, here are 5 steps that are vital to clinical research studies.



SCREENING 5

Screening decides if you can to take part in a study. A researcher discusses details such as procedures, risks and benefits. You ask questions.

CONSENT FORMS

After the screening process, if you agree to participate, you read and sign an informed consent form.

STUDY VISITS

Depending on the study, visits might include questionnaires, blood tests, brain scans, or medication. The research team collects your information, paying extra attention to your health and safety!

DATA ANALYSIS

Once you have completed your study visits, the research team analyzes the information collected.

SHARE FINDINGS

Because of study participants like you, researchers and community advisory teams are able to use the information collected to discover and share better treatment and care options for and with people living with illness.